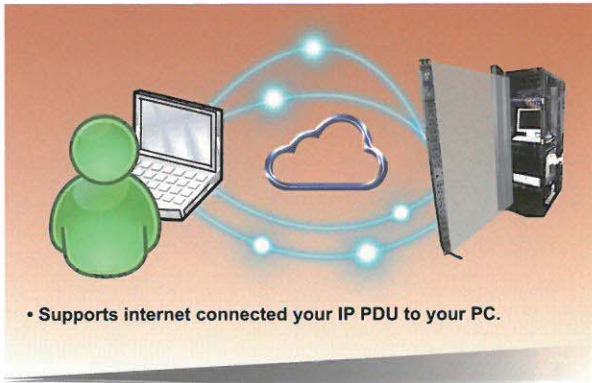


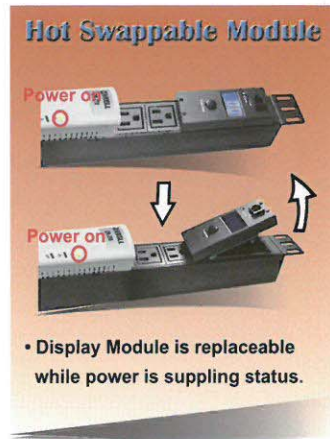


# HOTSWAP IP PDU

Aluminum Case



• Supports internet connected your IP PDU to your PC.



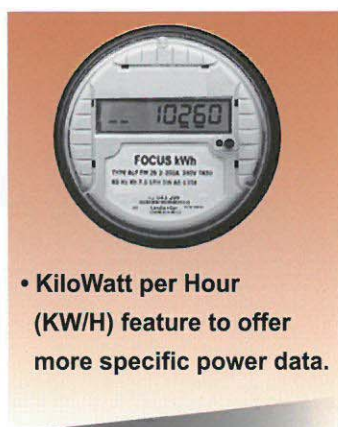
• Display Module is replaceable while power is supplying status.

Iron Case



## Key Features

- LCD Panel display current, voltage, and KW/H.
- Function button allows setting up current alert value.
- Supports enable/disable buzzer alarm sounds.
- Keeps experienced max. current value.
- Support SSL e-mail and SMS to sent the alarm.
- Support Http/Https to monitor PDU power consumptions remotely via Network instead of the presence of the personnel.
- Support SNMP V1, V2, V3. User can check HotSwap IP PDU status via SNMP View.
- Support SNMP Trap to collect and view warning messages.
- Support SysLog. User can collect device data by SysLog Server, and integrate this function with IDC View, the centralize management software.
- Support IP and MAC filter to prevent unauthorized user access to devices.
- Record operations and warning messages, user can check messages afterward.
- Support online firmware upgrade to renew equipment functions.



• KiloWatt per Hour (KW/H) feature to offer more specific power data.

Specification	HotSwap IP PDU Aluminum Case	HotSwap IP PDU Iron Case
Power Input	NEMA L5L6-30P / IEC 60930 / OEM acceptable	NEMA L5L6-30P / IEC 60930 / OEM acceptable
Outlet	NEMA 5-15R / IEC320 C13	NEMA 5-15R / IEC320 C13
Power Input Voltage	85-240 VAC 50/60 Hz	85-240 VAC 50/60 Hz
Operating Temperature	0-45°C	0-45°C
Operating Humidity	0-95%	0-95%
Storage Temperature	0-60°C	0-60°C
RJ 11 Daisy-Chain Interface	1	1
Circuit Breakers	Thermal circuit breaker	Magnetic circuit breakers
Display Panel	LCD	LCD
Certification	X	cTUVus (UL 60950-1) / CE / FCC
Minimum current resolution	0.1A	0.1A
Detection of current rating	+/-2% · +/-0.1A	+/-2% · +/-0.1A
Product Dimension	845 x 43 x 43 mm (W*D*H) → 16 Port	970 x 50 x 47mm (W*D*H) → 16/24 Port